

*Our*

AUTUMN 2024

# Berryfields

VISIT [BERRYFIELDSPC.ORG](http://BERRYFIELDSPC.ORG)



**Berryfields**  
Parish Council

## Chairman's View October 2024

Welcome to the last edition of 2024. It is hard to believe this edition includes events leading up to Christmas

Once again it has been a very busy summer with successful community events including the children's summer fun days and the Friday social evenings. Councillor Pike continued running his coffee mornings during the summer, which have become ever more popular. These continue to run on the first Tuesday morning of each month. Please do come and join him.

As we head through Autumn and into Winter, please don't forget the Roman Park Food Bank which is always here to support anyone in need. We are open every Thursday morning but unable to provide this service without your generous donations. Thank you to both AVA and Greenridge for supporting us with your Harvest Festival donations. Councillor Rees can be found out and about in the community, collecting your donations twice a month. Look out for further information later in this edition. We desperately need your support, as winter can be a particularly challenging time of year. Alternatively, food donations can be dropped outside the hall at any time.

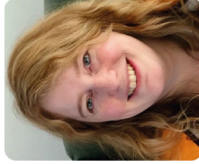
Thank you to all residents who have been helping to keep our community clean, tidy and graffiti-free. As we know, graffiti has become a big issue over the last few months and has been challenging for the parish office to keep on top of. If you would like to help, we have supplies of equipment and products to clear away graffiti without damaging the surfaces, so please pop by the office to grab some!

We will once again be holding our Santa's Grotto and craft market. If you are a local business, please contact me if you would like a stall. We are also hosting our popular Over 55's afternoon tea, please remember to book to avoid disappointment. Santa's Sleigh will be doing the rounds. Date and route will be published nearer the time. Do come along and support our Christmas events and celebrate New Year's Eve with us at the hall, details about all of these events can be found in this edition and on our Facebook page closer to the time.

Please feel free to contact the Parish Council office with any issues or questions, we are always there to help!

If you have any content or articles you would like to include in future editions then please get in touch, ourberryfields@berryfieldspc.org.

I hope everyone has a great time celebrating all the lovely festivals coming up including Halloween, Diwali, Bonfire Night, Christmas, New Year, and more. If you would like to share photos of your organised events in the next edition of Our Berryfields please do send them over.



**Chairman,**  
*Cllr Laurilee Green*  
laurilee.green@berryfieldspc.org

# Useful contacts

**Parish Office**  
Anthea Cass CilCA  
Parish Clerk  
clerk@berryfieldspc.org  
01296 925750

**Hall Bookings**  
booking@berryfieldspc.org

**Deputy Clerk**  
Sarah Tomlin  
01296 925750

## Advertise in Our Berryfields!

**1/4 page – £50 + VAT | 1/2 page – £100 + VAT | Full page – £200 + VAT**

If you are running a business and would like to advertise with us, please contact: [news@berryfieldspc.org](mailto:news@berryfieldspc.org).

Publication dates are subject to change depending on local events at the time of publication. All advertising will be invoiced before publication date. Payment of advertising space is required in advance of publication. Suggested content or articles for publication are welcome. Our Berryfields is also available on our website: [www.berryfieldspc.org](http://www.berryfieldspc.org).

**50% discount for Berryfields residents**

**Read by over 3,000 homes!**



**Cllr Rick Smith**  
Vice Chairman  
rick.smith@berryfieldspc.org



**Cllr Louise Rees**  
louise.rees@berryfieldspc.org



**Cllr Bindu Gundapudi**  
bindu.gundapudi@berryfieldspc.org



**Cllr Nigel Pike**  
nigel.pike@berryfieldspc.org



**Cllr Lucy Harmes**  
lucy.harmes@berryfieldspc.org



**Cllr Gareth Lane**  
gareth.lane@berryfieldspc.org



**Cllr Paul Redshaw**  
paul.redshaw@berryfieldspc.org



**Cllr Arun Sekhar**  
arun.sekhar@berryfieldspc.org



**Cllr John Yandrapati**  
john.yandrapati@berryfieldspc.org

ROMAN PARK HALL

# SOOTHS

7.00 PM - 8.30 PM

£2 ADMISSION  
AGES 11 - 13

GAMING | TABLE TENNIS | ARTS & CRAFTS  
TUCK SHOP | MUCH MORE!

UPCOMING DATES:  
FRIDAY 25 OCTOBER, FRIDAY 8 NOVEMBER  
AND FRIDAY 22 NOVEMBER

TO SIGN UP AS A VOLUNTEER TO HELP RUN THE  
GROUP PLEASE CONTACT:  
YOUTHCLUB@ROMANPARK.ORG



ROMAN PARK HALL - SIR HENRY LEE CRESCENT HP18 0YT

## Roman Park Youth Club

Our Youth Club runs mostly every other Friday and is very popular with our 11-13 year olds from Berryfields. If your child is 11 - 13 please scan the QR code to book or email us for more details, its only £2 and we offer a variety of activities.

We are also looking for members of the community who would be willing to give an hour of their time to share a skill or activity at our club one week. Please contact [youthclub@romanpark.org](mailto:youthclub@romanpark.org) for more details.

## The Message of Christmas

As I write this Christmas message the media is awash with news of what could develop into all-out war between Israel and Iran (and its proxies). By the time you read this life could look very different for a number of countries in the Middle East. The cry and prayers from around the world are "God bring peace and make this stop!"

Many men, women and children have already been killed or are suffering from life-changing injuries and trauma on both sides of the conflict. The cry and prayers around the world are "God where are you in all this?" The Bible though never seems to give us an easy answer to that timeless question. However, what we do see within its pages is that God has always come and been in the midst of our pain and suffering.

**"For God so loved the World that he gave his only son..." John 3:16**

At this time of year, we think back to that moment 2000 years ago in the little town of Bethlehem, where God's son was born in amongst pain, dirt and squalor. He went on to spend his life, teaching and showing us how to live and care for one another, despite our difficulties and differences.

God came to live amongst us, that's the power of Christmas. For those of you who have considered God as a God who is far away and uninvolved in your lives, or to those who have struggled to feel hope in the midst of what you are facing - to you God promises: 'I will be with you.'

Not distant, uninvolved or uncaring. Not out there, somewhere. But here, close, with us. Therefore, Christmas is a love story like no other, on a divinely cosmic scale, where God becomes human to draw near to us.

His invitation this Christmas is for us to draw close to him. A great way to do that is to join us at one of our Berryfields Christmas events this December:

- Carols at the Hall - Sunday 15th December 4.00pm at Roman Park Hall
- Carols Round the Crib - Sunday 22nd December 4.00-5:30 in AVA Primary Hall

Peace and goodwill to you all this Christmas.

**Revd Gareth Lane**  
Berryfields Community Vicar & Parish Councillor  
[www.churchonberryfields.org](http://www.churchonberryfields.org)



Click here for info on Christmas events

**BUCKINGHAMSHIRE RAILWAY CENTRE**

# NIGHT FRIGHT!

SATURDAY 26th OCTOBER  
ENTRY TO THE EVENT ANYTIME FROM 6PM

**16+**

ALL NEW  
SPINE-CHILLING  
HORROR EXPERIENCE  
IN THE MUSEUM!  
FREE TAROT CARD READINGS  
LIVE BAND  
FOOD AND BAR

Book at: [www.buckstrailcentre.org](http://www.buckstrailcentre.org)

**BUCKINGHAMSHIRE RAILWAY CENTRE**

# HALLOWEEN

## SPOOKTAGULAR

Sunday 27 OCTOBER  
10AM-5PM

Fun for all the family!

Take part in our play Red Riding Hood  
Meet Frankenstein on the train  
Play Halloween games and go on a spooky ghost hunt!

Book at [www.buckstrailcentre.org](http://www.buckstrailcentre.org)

### The Bernie family reunites

A quick update, Bernie and friends. It has been a busy year with many bookings for worthwhile causes and events.

Bernadette the wheelchair car has been on long-term loan for a good proportion of the year and Bella was out of action for a number of weeks having a new gearbox fitted with parts having to come from as far as Germany!

But for the first time in ages, the family is reunited in one place...

- 'Bernie' 16 seater minibus
- 'Bart' 13 seater minibus with tail-lift ideal for the elderly
- 'Bella' 16 seater minibus ideal for kids
- 'Bernadette' wheelchair ramp enabled car

All available for hire, with or without a driver

If you have any questions, please call Ashley Waite on **07977 401 548** or email [ashley@berniethebus.co.uk](mailto:ashley@berniethebus.co.uk)



## Tom Garrad Plumbing & Heating

**£10 off**  
a boiler service  
for Berryfields  
residents

- Boiler servicing
- Boiler repairs
- Landlord certificates
- General plumbing
- Unvented hot water systems

07960 445938

[tomgarrad@yahoo.com](mailto:tomgarrad@yahoo.com)

@tomgarradplumbing



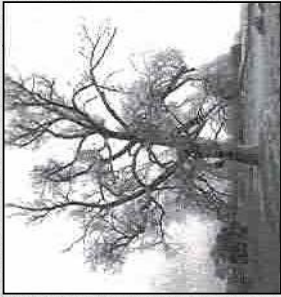
**BREAKFAST WITH SANTA**

Book now using the QR code

Saturday 7th & 14th December



# Saving the Black Poplar



I am Buckinghamshire born and bred and I have never lived outside the county, well known for its extensive Chiltern beechwoods, which, for centuries, provided few words for London and timber for the furniture industry in Wycombe and we are home to the famous woodland bodgers, the craftsman, who produced millions of chairs. As a child, I came to love those woods and soon after we married, Jean and I became life members of Men of the Trees, and later we enjoyed an inspiring visit to our founder Richard St Barbe Baker at his New Zealand farm shortly before he died.

In 1973, we came to Mursley on the northern edge of Aylesbury Vale and we heard on Radio Four a retired botanist from Kew describe the plight of the black poplar (*populus nigra betulifolia*). We thought that Edgar Milne-Redhead's description fitted several nearby trees, so we sent him samples which he confirmed with genuine, his first records from this area. Later I sent him many more local records confirming his view that Aylesbury Vale has the highest concentration of black poplars in Britain, but nearly all male and not reproducing naturally.

We now know that they're probably around seven thousand mature black poplar trees nationwide, and perhaps as many as half of those are in Aylesbury Vale. The black poplar is Britain's rarest native timber tree, a major landscape feature, sometimes reaching one hundred feet high and sixty feet wide, outranking even the oak and ash for size and splendour. It features in many Constable landscape paintings, including the Hay-Wain and Salisbury Cathedral.

Black poplars were often established near farms as pollards to provide light agricultural wood products and animal feed in a dry year, or as open grown trees

to provide curved timbers for barns and thatched cottages; also the upper floor of houses, maltings etc., because the wood will not easily catch fire. It was also used for wagon brake blocks, wagon floors, clags, thatching spars, sheep hurdles, matches, and much else besides.

The old country saying "as the twig is bent, so the tree's inclined" certainly applies to the black poplar which is light hungry; young trees will lean away from nearby mature trees and uncut hedges, but in open situations it will usually grow upright, except on very windy ridges and hilltops. Most mature black poplars grow at low elevation in the Midlands, from East Anglia to East Wales, also in parts of the Southwest, mainly along rivers and watercourses or near ponds or lakes in isolation or in single rows; they are really trees of open landscape rather than Woodland.

The tree will grow readily from carefully prepared two year old cuttings which I grow to give away; these are easy to plant, pushing them into crowbar holes about two feet deep, and they nearly always root. Since 1975 I have planted hundreds of cuttings throughout Britain, and some from our Mursley tree are growing well in Royal Parks in London and Windsor, at Buckingham Palace, Sandringham, Gatcombe Park, Bagshot Park, Lambeth Palace, Chequers, Salisbury Cathedral (to replace some of those painted by John Constable) and other special places. I have also given cuttings to small and large arboreta including Kew at Castle Howard in Yorkshire, a truly wonderful collection of specimen trees.

The largest black poplar in Britain, also possibly our largest native tree, is at Christ College Brecon, Brecon, one hundred and ten feet high and ninety feet across, a massive male. I have recently planted a female tree nearby. The black poplar will grow almost anywhere, however, not just in low-lying damp places, and I have long wondered how they might fair at higher elevations, the highest I know is near Malvern at seven hundred and fifty feet. In recent years I have successfully planted cuttings at that height on a dry windy chalk hilltop at Chequers, and at around one thousand feet on the Welsh border, also at thirteen hundred feet on Dartmoor, and even higher near Welsh water reservoirs. To

my surprise all of them are growing, albeit slowly.

Some of these very isolated plantings could be the saving of this special tree now that black poplars in the north-west of England have developed a pathogenic fungus according to Dr Fiona Cooper, keeper of the national database. She has done extensive DNA testing on black poplars in Britain and Ireland and in Northwest Europe, which indicates that most trees are quite closely related, with a few different clones. Fiona wrote a fascinating article about all that in summer 2003 issue of Tree News, the magazine of the Tree Council; her information also contributed significantly to the Forestry Commission information note, Conservation of Black Poplar, May 2004, available free from Forestry Commission Publications, 0870 121 4180.

For more than thirty years I have campaigned to lift the profile of the black poplar both locally and nationally, leading to the Aylesbury Vale District Council's countryside team helping farmers and landowners to protect and manage existing trees and to plant more in suitable places using local cuttings. AVDC now hosts the UK Black Poplar Conservation Group, the surveyors, recorders, pollarders, planters and after carers who meet annually in November to share information on this rarest and largest British native timber tree.



*Roger Jeffcoat  
Tree Foundation, August 2005  
01296 715466*

## Little Berries YOUR BERRYFIELDS BABY & TODDLER GROUP EVERY THURSDAY (TERM TIME)

Age 0 - 5 years old

9.30am - 11am

£2.50 for the first child and £1 extra for each additional child (cash only)

 @BerryfieldsToddlers

 @littieberriesplaygroup

Roman Park Hall, Sir Henry Lee Crescent, HP18 0VT

# Dear Berryfields Residents!

I'm Ashley Waite, one of your Unitary Councillors on Buckinghamshire Council, proudly representing Berryfields and our community.

I hope this message finds you well and the kids are settling back into school. The last couple of months have been very busy with an unexpected general election and a new government in power, which will bring changes to local government priorities.

Along with my fellow Councillors, we continue to work closely with the Parish Council as well as the consortium to ensure that roads and assets on the estate continue to be transferred over as part of the planned development. We receive a number of queries from local residents, which include, as well as roads and parking, school places, planning, and care for loved ones, which is vitally needed.

As we approach Christmas, Santa and his shed will be coming to Berryfields again this year. We are hoping to cover most of the estate in two nights in December. Please look at the Parish Council website for more details.

In closing, I want to express my gratitude for your continued support and engagement as we all continue to build a stronger, more vibrant community. Please do not hesitate to reach out to me or the Berryfields Parish Council with any questions or suggestions.

Reach out: [ashley.waite@buckinghamshire.gov.uk](mailto:ashley.waite@buckinghamshire.gov.uk) Give me a ring: **07977 401548**  
Follow me on Facebook: [@awaitecouncil](https://www.facebook.com/awaitecouncil)

ROMAN PARK FOOD BANK

# Food Drive



Collections (look out for the flag)

**2nd WEDNESDAY OF EACH MONTH**      **4th WEDNESDAY OF EACH MONTH**  
**6:30PM TO 7:30PM**                      **6:30PM TO 7:30PM**  
**BERRYCROFT**                              **GATEWAY PLAY PARK**  
**MEDICAL CENTRE**

Food is a human right and is an immediate and tangible way to help someone. Every donation of food helps.

We accept donations of non-perishable food in jars, cans and sealed packets. We recommend sauces, soups, beans, vegetables in cans or jars, honey, peanut butter, candy, boxed juices, long-life milk, coconut cream and fish in oil.

clerk@berryfieldspc.org



**The food bank needs your support - please donate where you can. Alternatively food can be dropped at Roman Park Hall any time.**

OVER 558

# Christmas Tea

WEDNESDAY 5 DECEMBER 2-4PM

AFTERNOON TEA AND CHRISTMAS CAROLS

BERRYFIELDS RESIDENTS ARE WARMLY INVITED TO ATTEND THIS FREE EVENT!



PLACES ARE LIMITED, SO PLEASE EMAIL [BOOKING@BERRYFIELDSPC.ORG](mailto:BOOKING@BERRYFIELDSPC.ORG) OR CALL 01296 925750

TO BOOK!

AT  
ROMAN PARK HALL,  
SIR HENRY LEE CRESCENT,  
AYLESBURY, BUCKINGHAMSHIRE,  
HP18 0YT



Green Ridge Primary PTA Presents

## FIREWORKS NIGHT 2024

Saturday 9th November 2024

BBQ - REFRESHMENTS - AND MORE!

Win the chance to start the Fireworks

Tickets on sale at:  
[www.pta-events.co.uk/greenridgepta](http://www.pta-events.co.uk/greenridgepta)

Green Ridge Primary Academy,  
President Road, Aylesbury, HP18 0FT

## AVAILABLE FOR HIRE!

Wedding Receptions | Christenings | Funerals | Conferences | Birthdays Parties | Dinners, Banquets or Balls | Office Hire

Our halls are a popular location for hosting parties and events. We offer a bespoke service, to cater to your specific needs. Our modern and spacious halls can host up to 200 guests. They are adaptable, and can be decorated to your taste. There is access to a fully stocked bar. We also have office space available for hire. There will always be friendly and accommodating staff on hand to ensure your event runs smoothly. We have ample free parking on site, with a train station and hotel nearby for those travelling from afar.

FOR MORE INFO, CONTACT US AT  
[booking@berryfieldspc.org](mailto:booking@berryfieldspc.org)  
01296 925755  
ROMAN PARK HALL,  
AYLESBURY, HP18 0YT

# HALLOWEEN BINGO NIGHT

KIDS PUMPKIN  
PAINTING  
+ PRIZE FOR  
BEST COSTUME

GET YOUR  
BINGO BOOK+PEN  
JUST £7

FRIDAY 1ST NOVEMBER  
ROMAN PARK HALL  
FROM 6:30PM

SCAN HERE



BOOK ONLINE AT

[ROMANPARKHALL.LEMONBOOKING.COM/PAGE/EVENTS](https://romanparkhall.lemnonbooking.com/page/events)

# LEST WE FORGET

11th November

Join us at Roman Park

For A Remembrance Reflection with  
Reverend Gareth Lane

From 10:50am culminating in a  
3 minute silence at 11:00am

**KC HOGAN**  
BUSINESS  
SERVICES

ACCOUNTANTS & TAX ADVISORS

- Accounts for Sole Traders and Companies
- Self Assessment
- VAT
- Bookkeeping
- Payroll

To find out how we can help, email  
[sean@kchoganbusinessservices.co.uk](mailto:sean@kchoganbusinessservices.co.uk)  
or call 07817 415 259





**ALL ABOARD THE PANTO EXPRESS**



**Jack and the Beanstalk**

- See Father Christmas on a steam train
- See our mini Pantomime
- Enjoy a virtual journey to see Mrs Claus!

[www.buckrailcentre.org](http://www.buckrailcentre.org)

Station Road, Quainton, Aylesbury HP22 4BY  
Tel: 01296 655720 Email: [office@bucksrailcentre.org](mailto:office@bucksrailcentre.org)



Fully Insured

**ARTISAN CUISINE**  
GRAZE | STYLE | DINE

*Events Menu*

FOR ALL ORDERS & ENQUIRIES:  
Tel: 07928 789 245 | Email: [greatfood@artiscuisine.co.uk](mailto:greatfood@artiscuisine.co.uk) | Website: [www.artiscuisine.co.uk](http://www.artiscuisine.co.uk)



Events Menu Options Inside

FOOD HYGIENE RATING 5



**DESAI Grocers**  
AYLESBURY


**LENTILS / NAMKEEN / SWEET / RICE / ATTA**  
**Fruit & Vegetables**  
**OIL / SPICE / FROZEN/ & MUCH MORE**

Monday To Saturday 11 am to 7.30pm  
Sunday 11 am to 6pm

27 Edison Road  
Aylesbury  
HP19 8TE  
07984445363

**AFFINITY**  
HAIR DESIGN

Professional Styling & Hair Salon




Affinity Hair Design provides professional hair styling and a premium salon experience whilst being situated in the scenic Waddesdon High Street, making for a relaxing experience whilst in the hands of our experienced hairdressers.

Cut & Blow Dry |  
Colouring | Children |  
Barbering ... and many more!

62 High Street  
Waddesdon  
HP18 0JD  
01296 658875  
[www.affinityhairdesign.co.uk](http://www.affinityhairdesign.co.uk)

**50% OFF**

For new customers only\*  
\*Terms and conditions apply (cut and blow dry, use code NC50)




**AYLESBURY THERAPY**




Low Cost Counselling Service  
Counselling for age 16+  
In person counselling for £25 per session  
Aylesbury Therapy, 15 Temple Street, HP20 2RN

[www.aylesburytherapy.co.uk](http://www.aylesburytherapy.co.uk)  
Email: [enquiries@aylesburytherapy.co.uk](mailto:enquiries@aylesburytherapy.co.uk)

**I'd like to Borrow** CIC is a tool and equipment borrowing scheme open to all Buckinghamshire residents, which aims to:

- Strengthen community resources
- Encourage collaborative consumption and peer-to-peer borrowing
- Ensure that everyone has access to the tools they need to be able to carry out household maintenance without having to rely on expensive tool hire or purchase

• Reduce carbon emissions and resource consumption

• Reduce waste at landfill sites

The catalogue of great borrowing items can be found here - <https://idliketoborrow.com/my-turn/>.

After just over a year, the library is going from strength to strength and we are regularly lending a range of items from our storage unit in Quainton.

If you have questions or wish to donate items please ring Ashley Waite on 07977 401548

**I'd Like a Bike** is a service that provides bikes for people who are financially struggling. This includes care leavers, refugees, and underprivileged families. We provide second-hand bikes so that people can get to work, school, or even just to enjoy leisure time exploring local greenways. I'd Like a Bike is a subsidiary of I'd Like To

Borrow, with both projects being managed and led by Cllr Ashley Waite & Katie Collier (Complete Package Marketing) along with a few volunteers. The service is always looking to welcome new volunteers to help out, so if this is something that appeals to you, please contact them at [info@idliketoborrow.com](mailto:info@idliketoborrow.com). Whatever skills you have in any area will be put to excellent use within the service and you will be warmly welcomed on board.



## YOUR NEIGHBOURHOOD POLICING TEAM Aylesbury North

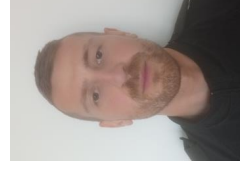
BUCKINGHAM PARK/ ELMHURST/WATERMEAD/BERRYFIELDS



Inspector  
James Davies



Sergeant  
Josie Elworthy



Police Constable  
Ashley Collins



PCSO  
Dan Leonard

The neighbourhood policing team work with our local communities to make Aylesbury Vale safer

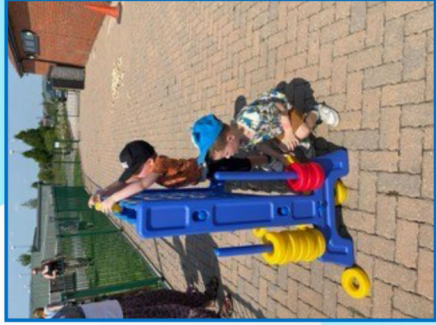
To contact the Aylesbury North Team call **101** or email them on [AylesburyEastNHPT2@thamesvalley.police.uk](mailto:AylesburyEastNHPT2@thamesvalley.police.uk)

You can also report an incident on our website: [www.thamesvalley.police.uk](http://www.thamesvalley.police.uk)

**In an emergency always call 999**

**Visit us on Facebook at [www.facebook.com/TVPavlesburyVale](http://www.facebook.com/TVPavlesburyVale)**





# Summer of Fun at Roman Park



Thank you to all who attended and supported our Children's summer fun days. It was wonderful to see so many people having fun with the music workshops, magic shows, donkey rides, talent competitions, bouncy castles, face painting, hook-a-duck, arts & Crafts, outdoor games and food stalls.

We can't wait to do it all again next year!

# GUIDE TO GCSES

A big congratulations to everyone who finished their exams! I wanted to share a few tips I learned during GCSE time, so that everyone who will be sitting exams next year can have some guidance and feel prepared.

## MAKE REVISION RESOURCES

**Flashcards:** On one side, write a question or key term and on the other write the answer or definition. Keep the information concise and target the mark scheme. Quizlet or Anki are great for digital flashcards.

**Mind Maps:** Start with the main topic in the center of the page. Draw branches to add notes containing keywords. Include images and colours to provide visual aids.

## EFFECTIVE REVISION METHODS

**Pomodoro Technique:** Set a timer for 25 minutes to work on a task with full focus. Take a 5-minute break. Repeat 3 more times and then take a longer break (15-30 minutes).

**Blurting:** Pick a topic or subtopic to revise. Without looking at your notes, write down everything you can remember about the topic. Compare what you've written with your revision notes/textbooks. Identify gaps in your knowledge and review these areas.

## FREE RESOURCES

### Maths:

- Maths Genie
- Corbett Maths

### Science:

- Cognito
- FreeScienceLessons
- Physics And Maths Tutor

### Geography & History:

- Seneca

### Languages:

- French- Learn French with Alexa
- Spanish- Astarspanish
- Languages Online

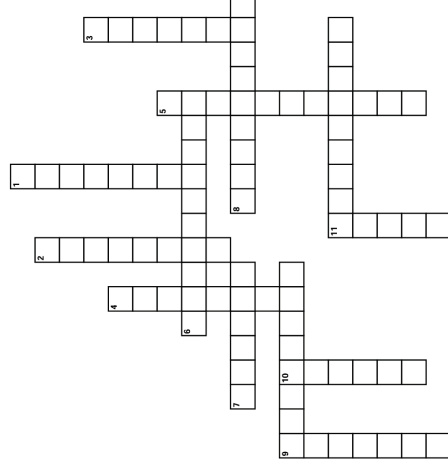
### English:

- Mr Bruff
- Mr Everything English
- Mr Salles
- First Rate Tutors



# ENGLISH

## English Grade 9 Vocabulary



### Across

- [6] Extremely or unusually small
- [7] Countless or extremely great in number
- [8] Very puzzled
- [9] Starts with C and means a disaster
- [11] Inspiring disgust and loathing; repugnant

### Down

- [1] Having or showing care and conscientiousness in one's work or duties
- [2] Characterized by or feeling intense excitement and happiness
- [3] Deep regret or guilt for a wrong committed
- [4] Feeling or expressing great happiness and triumph
- [5] Hostile and aggressive
- [6] The quality of being open and honest; frankness
- [7] The quality of being able to show an ability to accurately assess situations
- [11] Bright blue in colour

## ENGLISH LANGUAGE:

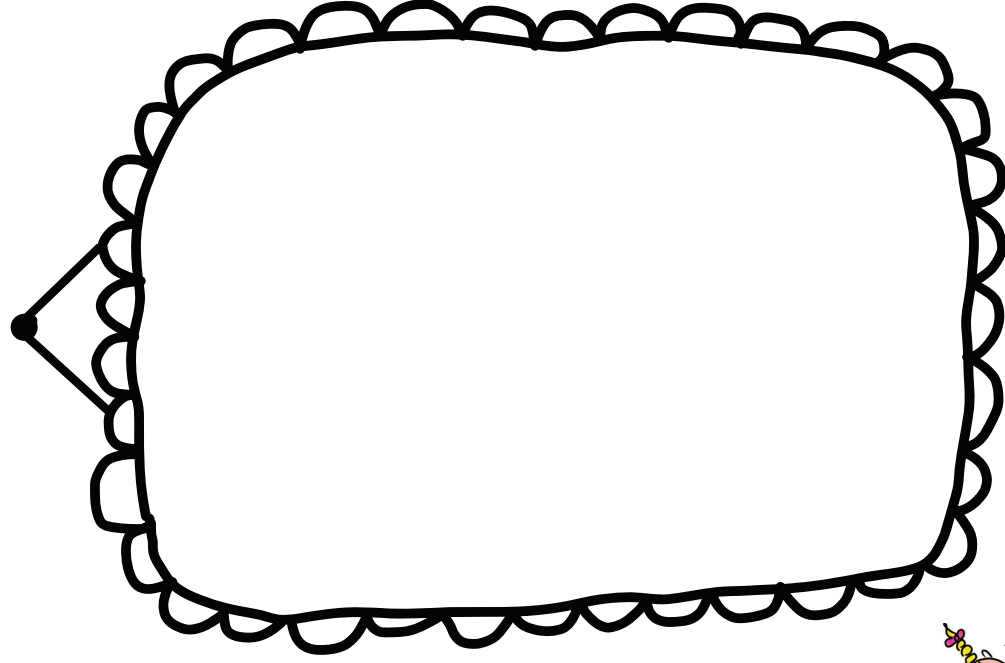
- Ensure you know the form for an article, letter and speech for transactional writing.
- Use a checklist of language techniques to include in both creative and transactional writing such as a metaphor, simile, tricolon and ambitious vocabulary.
- Answer questions about the text provided, specific to the way the mark scheme wants such as using evaluative words.

## ENGLISH LITERATURE:

- Understand a rough timeline of events for each book and the main plot. Annotate the book identifying form, structure and language techniques.
- Create quote banks for key quotes for each character and theme. For example, in Macbeth you could do Power, Violence and Ambition.
- Memorise your quotes and some pre-written analysis for each quote.
- Create essay plans for a variety of characters and themes that could possibly come up.

# Kids Corner

## MY SELF PORTRAIT



My name is:-----



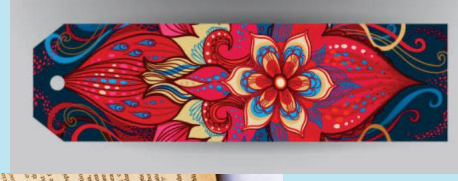
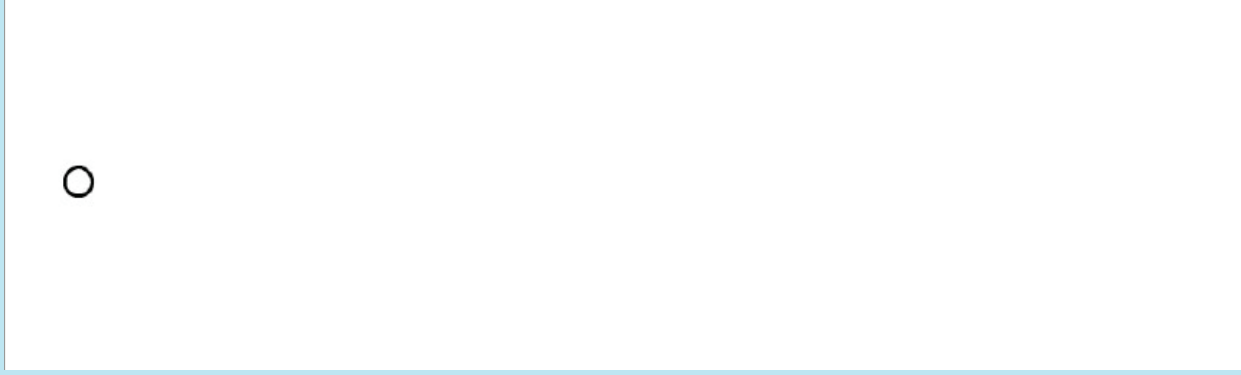
# DIY Bookmark

## Steps:

1. Decorate the bookmark template with drawings, stickers or paint on card.
2. Cut out the template and stick it on card.
3. Punch a hole at the top and tie a piece of yarn through it.

## Book Recommendations:

- Holes
- Kensuke's Kingdom
- Wonder
- The Boy in the Striped Pyjamas
- The Hobbit



# Berryfields BMX Pump Track

As you may have noticed recently, work has begun on Berryfields very own pumptrack adjacent to the existing skatepark on Martin Dalby Way.

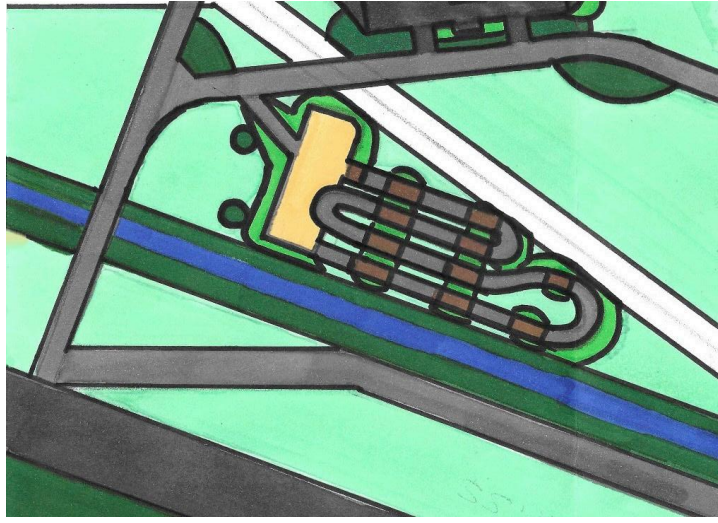
A pumptrack is basically a small BMX track consisting of corners, jumps and rollers built in such a way that you can navigate it without having to pedal, using the undulations to gain speed. It can be used by all abilities and ages, scooters, skateboards, BMX's and any other bike you can think of.

The pumptrack is being built by Dirtworks BMX who have vast experience in this field and are rider owned company.

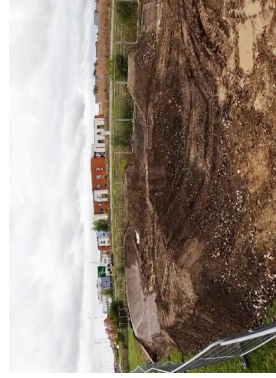
Expected to be completed this month, once open please head over and have a look and get a lap in! There will be plenty of local riders on hand to give tips and advice if your unsure how to approach it at first.

Pete Bowcock our resident Berryfields BMXer would like to say a huge thank you to all local residents that have engaged with polls, planning and comments leading up to this build, a massive thank you to the Consortium and the Parish Council and Councillors that have enabled this. Thank you to all those been on hand to deal with the problems and work arounds we've had to endure, and anyone else involved that's helped this happen.

If you would like some footage of pumptrack riding please have a look on YouTube for the **RADDADTV** channel, it will give you a great idea of what pumptracks are.



LET'S RIDE. AND NO EXCUSES,  
WEAR A HELMET. AT ALL TIMES!!!



# Little Berries

Just £2.50  
for one child  
+£1 for each  
additional  
child

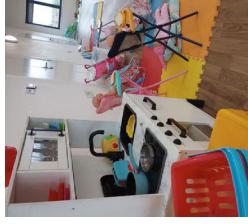
Whatever the weather, there is always a warm, friendly welcome awaiting parents/carers at Little Berries, the Berryfields Baby and Toddler Group.

## WE MEET EVERY THURSDAY MORNING DURING TERM-TIME AT ROMAN PARK HALL.

Mums, Dads, Grandparents, carers and childminders all gather each week with bumps, babbies, toddlers and pre-schoolers to play with a huge variety of toys. There is always a different activity to enjoy with your child, from playdough to water, sticking and gluing to colouring, or something more seasonal. There are books, puzzles, building bricks, dollies, prams, a kitchen with play food, toy vehicles & garage, dressing-up clothes, and a dedicated baby area with appropriate toys. We now have our own outdoor area for when the weather is good and a larger space indoors for when the weather is not so good!

While the grown-ups enjoy a chat and tea/coffee (and a biscuit!), there's a healthy snack for the children and then join in with a sing-along at the end of each session (with actions, of course!).

Little Berries is just £2.50 for one child and an extra £1 for each additional child. The group is open to everyone, babies to school age. Come visit us one Thursday!



## CAN YOU HELP?

We are always looking for enthusiastic and committed parents to join our committee and help with the running of this group. Please speak to us at the group or send a message if you'd like to know more.

Find us on Facebook @BerryfieldsToddlers or email [berryfieldstoddlers@gmail.com](mailto:berryfieldstoddlers@gmail.com)

# Sleeping Beauty to cast its spell on Waddesdon Manor this Christmas

Friday 15 November 2024 – Sunday 5 January 2025

Inspired by the tale of Sleeping Beauty, Waddesdon is set to be transformed for a magical festive experience. Enjoy beautifully decorated interiors, new light projections on the Manor façade, a glittering light trail in the gardens and the return of the ever-popular Christmas market.

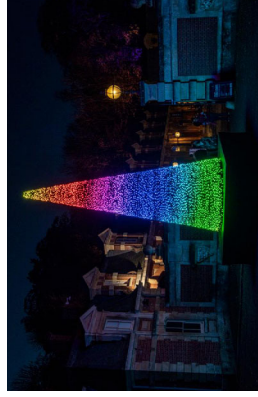
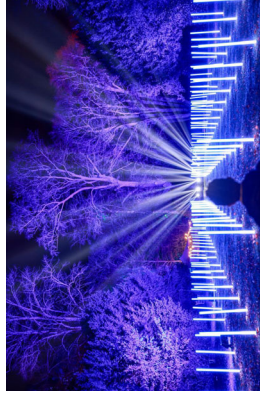
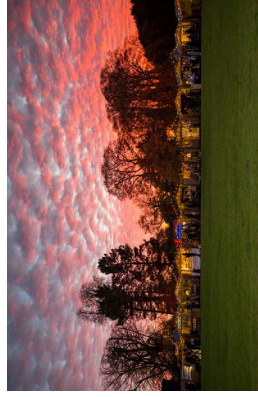
Successive generations have grown up with the tale of the beautiful princess who, cursed by a wicked fairy, falls into a 100-year slumber from which only the kiss of true love will wake her. The original story, as told by Charles Perrault (1628-1703) and the Brothers Grimm (1785-1859) has inspired countless artists over the years, from Tchaikovsky's celebrated ballet to Walt Disney's animated film, Sleeping Beauty is now a cherished classic.

The story also has a special significance for the Rothschild family – who originally built Waddesdon Manor – for very personal reasons. In 1913, James (1878-1957) and Dorothy de Rothschild (1895-1988) commissioned the renowned Belarusian artist and stage designer, Léon Bakst (1866-1924) to paint a set of seven panels depicting scenes from Sleeping Beauty for the dining room of their London townhouse.

Taking this magical story as inspiration, a team of designers and artists are creating Waddesdon's most enchanting Christmas experience to date with theatrical installations, projections and soundscapes bringing the much-loved fairytale to life in some of the Manor's grandest rooms.

Also new for 2024, visitors are invited to five late-night openings on selected Fridays, giving visitors even more time to enjoy everything on offer. The Grounds will be open from 12-9pm and the House from 12.30-8pm on:

- Friday 22 November
- Friday 29 November
- Friday 6 December
- Friday 13 December
- Friday 20 December



Full details of prices and online booking information, here:

[www.waddesdon.org.uk/christmas](http://www.waddesdon.org.uk/christmas)

Roman Park Hall

# NEW YEARS EVE PARTY

WITH DJ DAN BLAZE

7.00pm to 1.00am

ALL AGES, FAMILIES & KIDS WELCOME  
*S.E.N/D Safe Event*

**Roman Park Hall, Berryfields, Aylesbury, HP18 0YT**

Licensed Bar, Bring Your Own Snacks  
Entertainment & Photobooth  
Free Squash For Kids  
& some extra surprises

Book early for discounted ticket prices  
and to avoid disappointment when we're sold out!

[www.djdanblaze.com#events](http://www.djdanblaze.com#events)



WELCOMING A BRAND NEW ESQUIRES  
COFFEE SHOP AT KINGSBROOK AYLESBURY

# ESQUIRES COFFEE KINGSBROOK



Monday	6:30am - 7pm
Tuesday	6:30am - 7pm
Wednesday	6:30am - 7pm
Thursday	6:30am - 7pm
Friday	6:30am - 7pm
Saturday	6:30am - 7pm
Sunday	6:30am - 7pm



COFFEE · FOOD · PEOPLE



## OUR LOCATIONS



### ESQUIRES COFFEE LUCAS

Sir Henry Lee Cres, Aylesbury HP18 0PE

### ESQUIRES COFFEE AYLESBURY

Unit 6, Concorde Square, Aylesbury HP18 1AS

### ESQUIRES COFFEE KINGSBROOK

Unit D, & E, Kingsbrook Basin, Broughton, Bierton, Aylesbury HP22 7ER

Ethical coffee chain with a  
community spirit.  
Artisan café serving speciality  
Fairtrade and organic coffee, teas,  
fresh food and sweet treats.



ESQUIRES  
COFFEE